



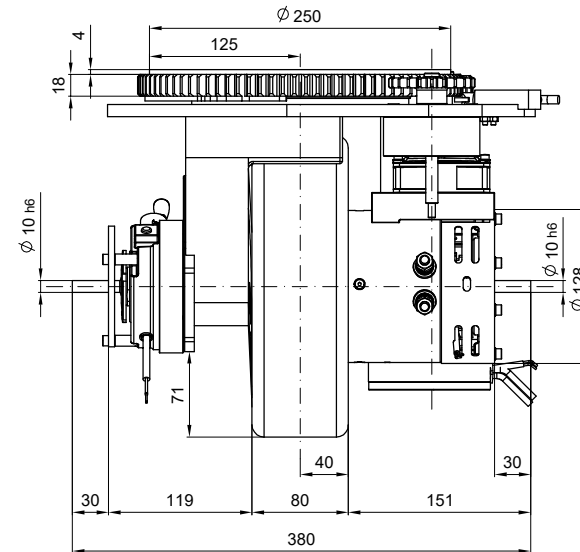
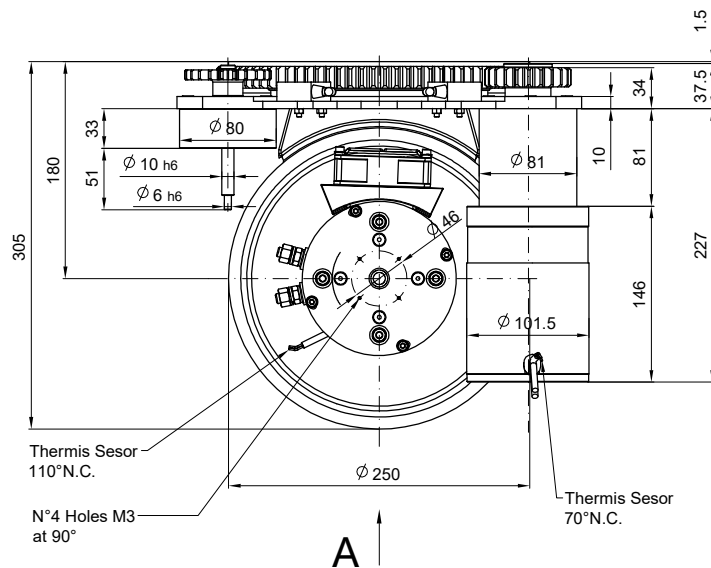
# DC MOTOR IN WHEEL UNIT

CODE

**MRT20.0149.01**

Rev.:

Date:



### Traction motor data

Type: Permanent Magnet Motor		
Power(S2 - 60min)	W	1000
Battery voltage	V	48
Speed	Rpm	2200
Current	A	30
Torque	Nm	4.3
Enclosure	IP	20

### Traction gear data

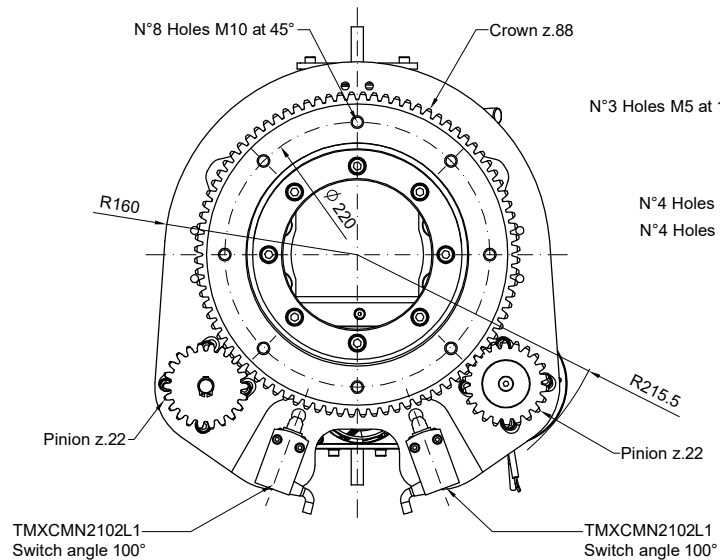
Gear ratio	i	1:34.56
Max accel. and braking torque	Nm	280
Norminal wheel torque	Nm	125
Max load on poliurethan wheel	Kg	900
Brake torque	Nm	8
Lubrication	Grease	

### Steering gearmotor data

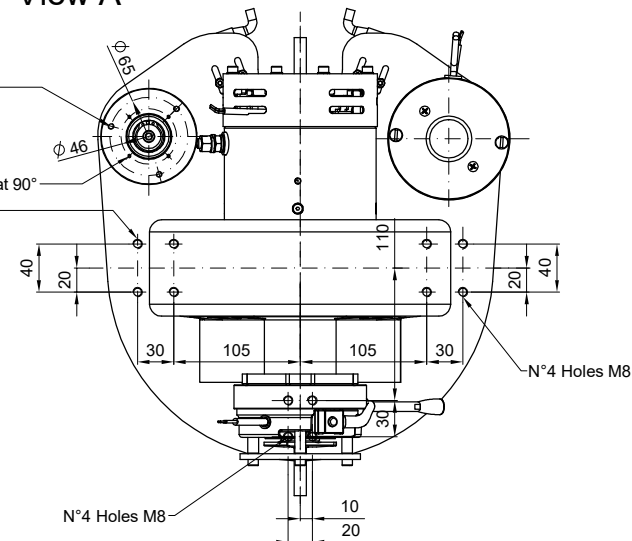
Type: Permanent Magnet Motor		
Power(S2 - 60min)	W	200
Battery voltage	V	48
Motor Speed	Rpm	2800
Current	A	5.2
Motor torque	Nm	0.68
Gear ratio	i	1:45.56
Gear Output Torque	Nm	23.3
Enclosure	IP	20
Lubrication	Grease	

### Total Weight

Kg	53
----	----



### View A



Data:	29/05/2017	Scala:	1 : 4	<b>A3</b>
Date:	29/05/2017	Scale:	1 : 4	
Dis:	R.P.			