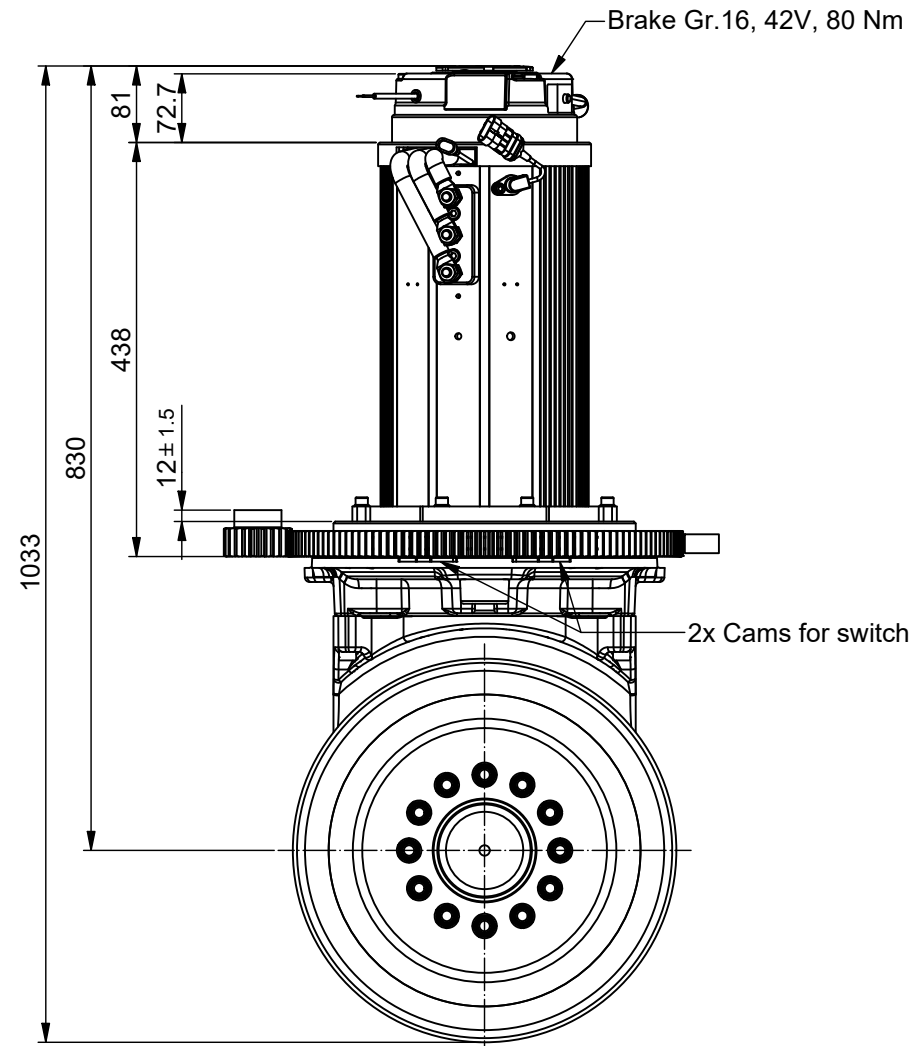
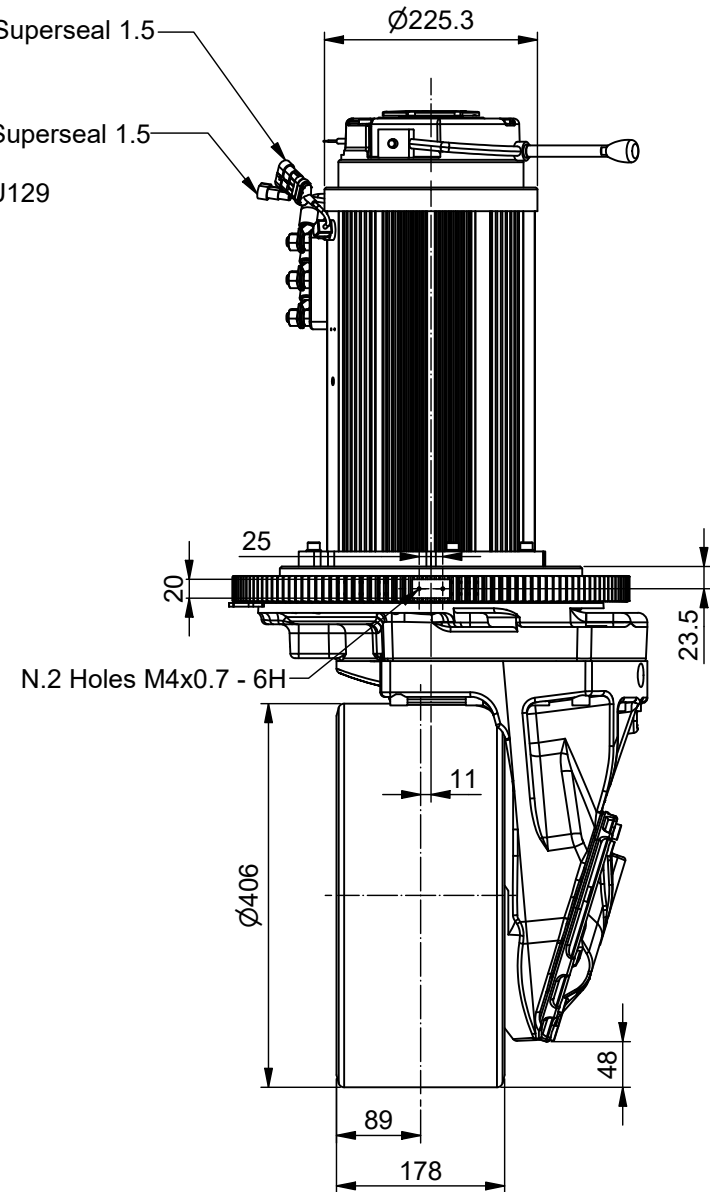




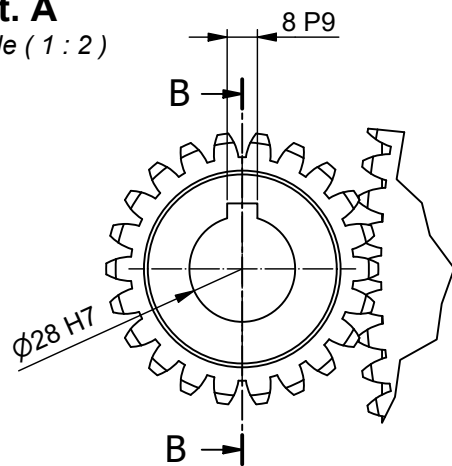
Plug AMP Automotive Superseal 1.5
Series P4 282106-1
Encoder RT 64 PPR

Plug AMP Automotive Superseal 1.5
Series P2 282104-1
Thermic sensor STS1 U129

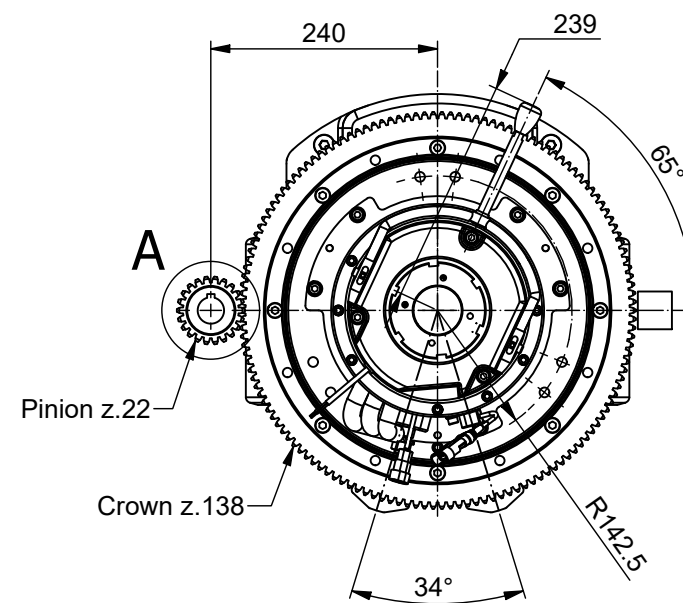
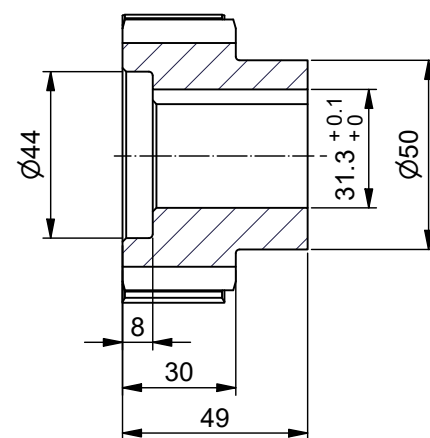


Det. A

Scale (1 : 2)

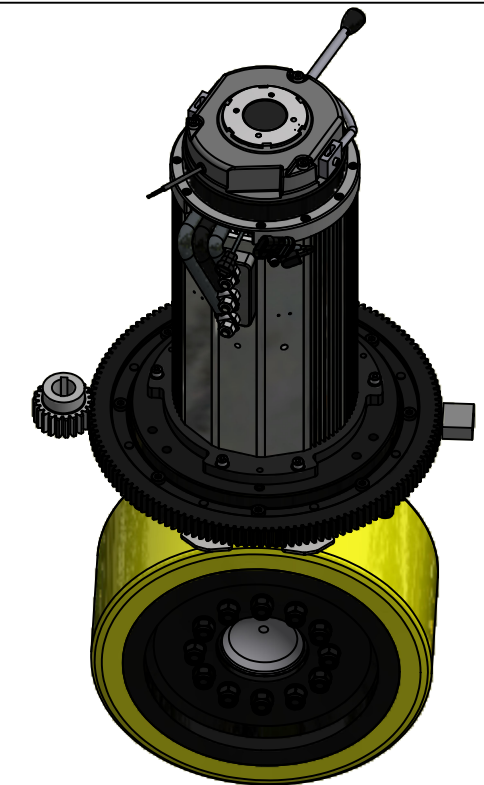


B-B (1 : 2)



Traction motor data		
Type : AC Asynchronous		
Curve	A01183	
Power	W	6500
Motor voltage (~3)	V	27
Battery voltage	V	48
Speed	Rpm	1350
Frequency	Hz	45
Current	A	180
Torque	Nm	46
Enclosure	IP	44
AC motor type	AME 200 - 230	

Traction gear data		
Gear ratio	i	1:24.4
Max accel. and braking torque	Nm	2600
Nominal wheel torque	Nm	898
Max load on vulkollan wheel	Kg	4300
Brake torque	Nm	80
Lubrication	Oil	



Total Weight	Kg	255
---------------------	----	-----

Rev.	Description	Date	Signature
C			
B			
A			

Data :	26/07/2021	Scala :	1:8	A3
Date :		Scale :		
Dis :	U.L.			
Drawn :				