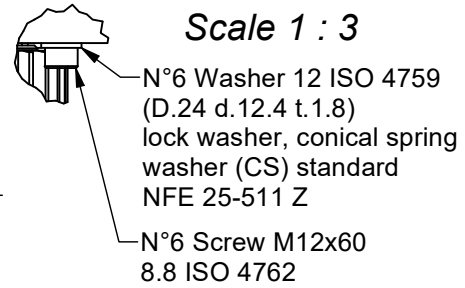
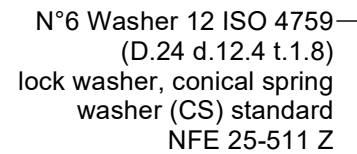


Det. X
Scale 1 : 3

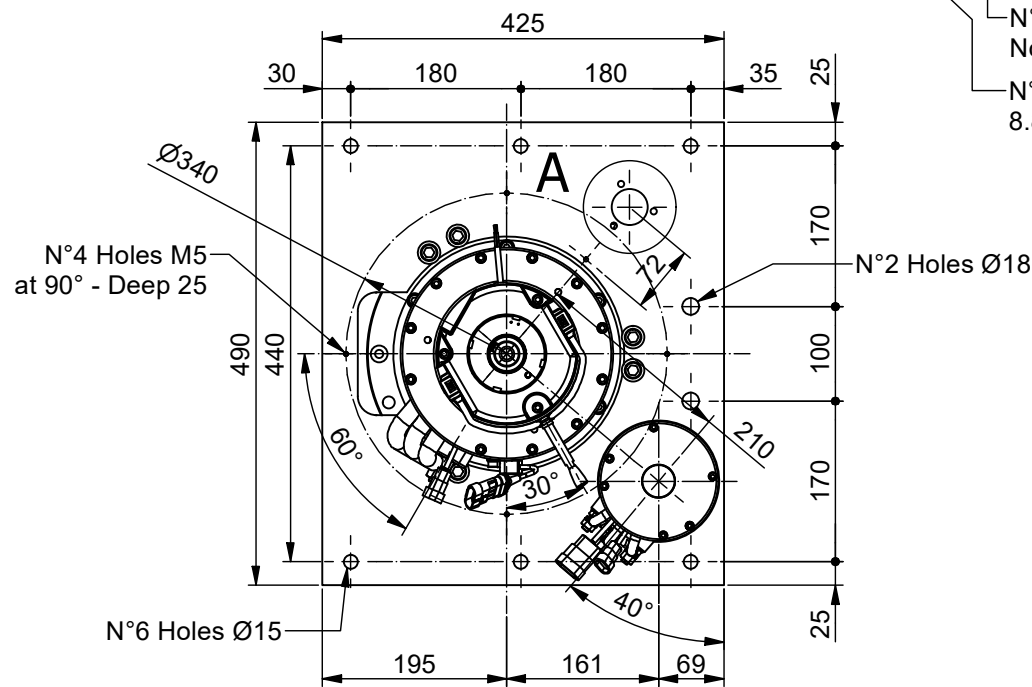
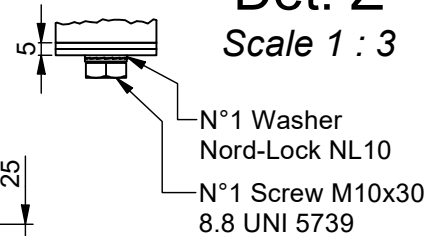


N°3 Screw M8x25 8.8 ISO 4762

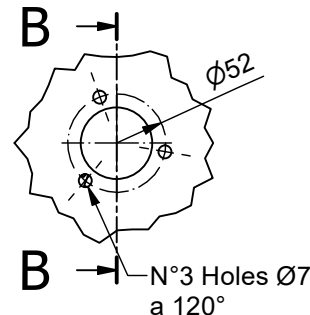
Det. Y
Scale 1 : 3



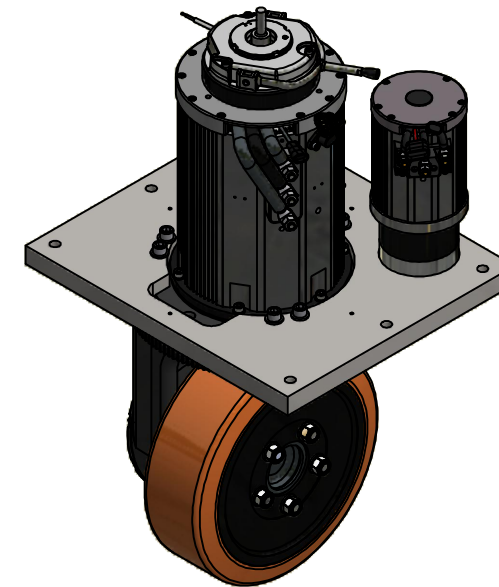
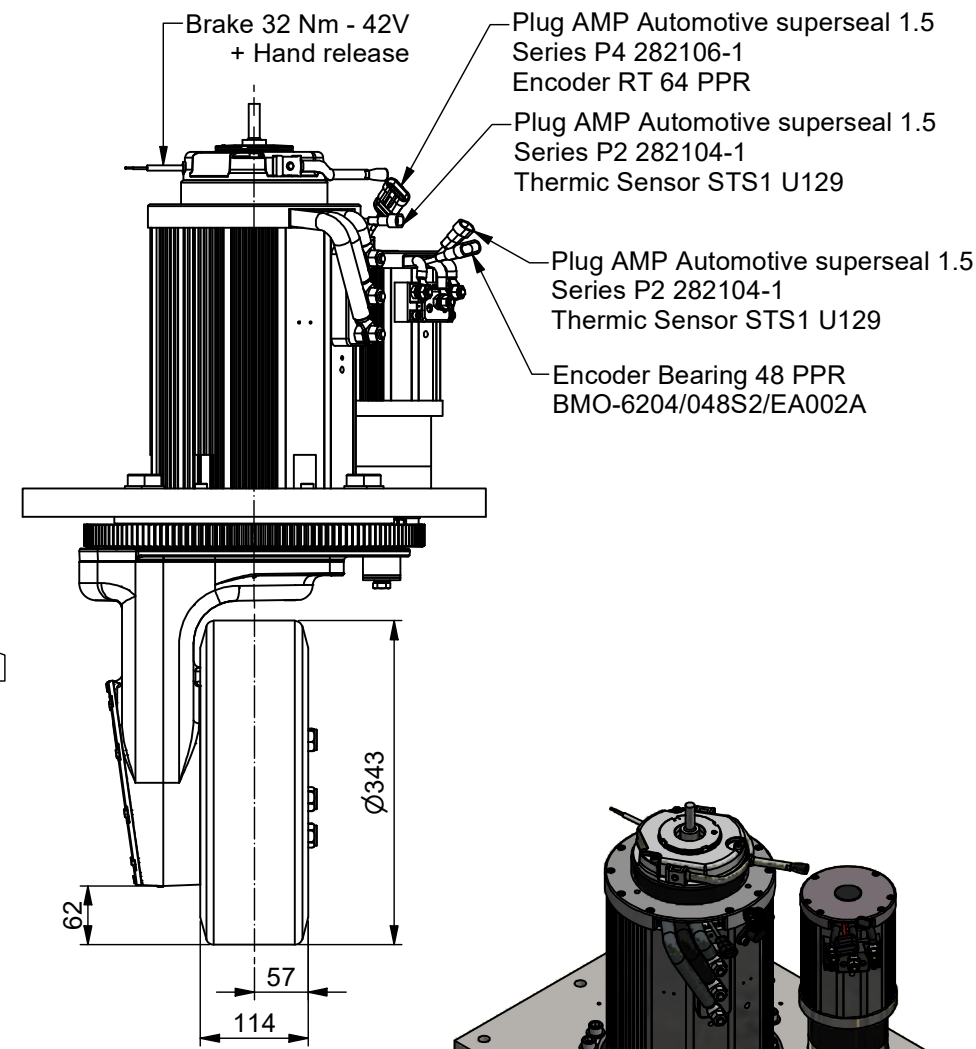
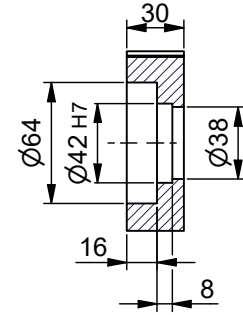
Det. Z
Scale 1 : 3



Det. A



Sez. B-B



Do not use Loctite
Non usare Loctite

Screws M12 class 8.8 tightening torque : 95 Nm
Coppia di serraggio viti M12 classe 8.8 : 95 Nm

Screws M8 class 8.8 tightening torque : 22 Nm
Coppia di serraggio viti M8 classe 8.8 : 22 Nm

Traction motor data		
Type	AC Asynchronous	
Curve		
Power	W	6000
Motor voltage (~3)	V	27
Battery voltage	V	48
Speed	Rpm	2900
Frequency	Hz	100
Current	A	167
Torque	Nm	19.75
Enclosure	IP	20
AC motor type	AME200 - 160 - 4	

Traction gear data		
Gear ratio	i	1:25.6
Max accel. and braking torque	Nm	1400
Nominal wheel torque	Nm	455
Max load on vulkollan wheel	Kg	2600
Max load on poliurethan wheel	Kg	-
Max load on solid rubber wheel	Kg	-
Brake torque	Nm	32
Lubrication	Oil	

Steering gearmotor data		
Type	AC Asynchronous	
Curve		
Power	W	800
Motor voltage (~3)	V	27
Battery voltage	V	48
Motor Speed	Rpm	2800
Frequency	Hz	100
Current	A	22
Motor torque	Nm	2.7
Gear ratio	i	1:45.56
Gear output torque	Nm	92
Enclosure	IP	20
Lubrication	Grease	
AC motor type	AGE106 - 80 - 4	

Total Weight	Kg	189
---------------------	----	-----

Rev.	Description	Date	Signature
C			
B			
A			

Data :	13/01/2021	Scala :	1 : 8	A3
Date :		Scale :		
Dis :	A.A.			
Drawn :				